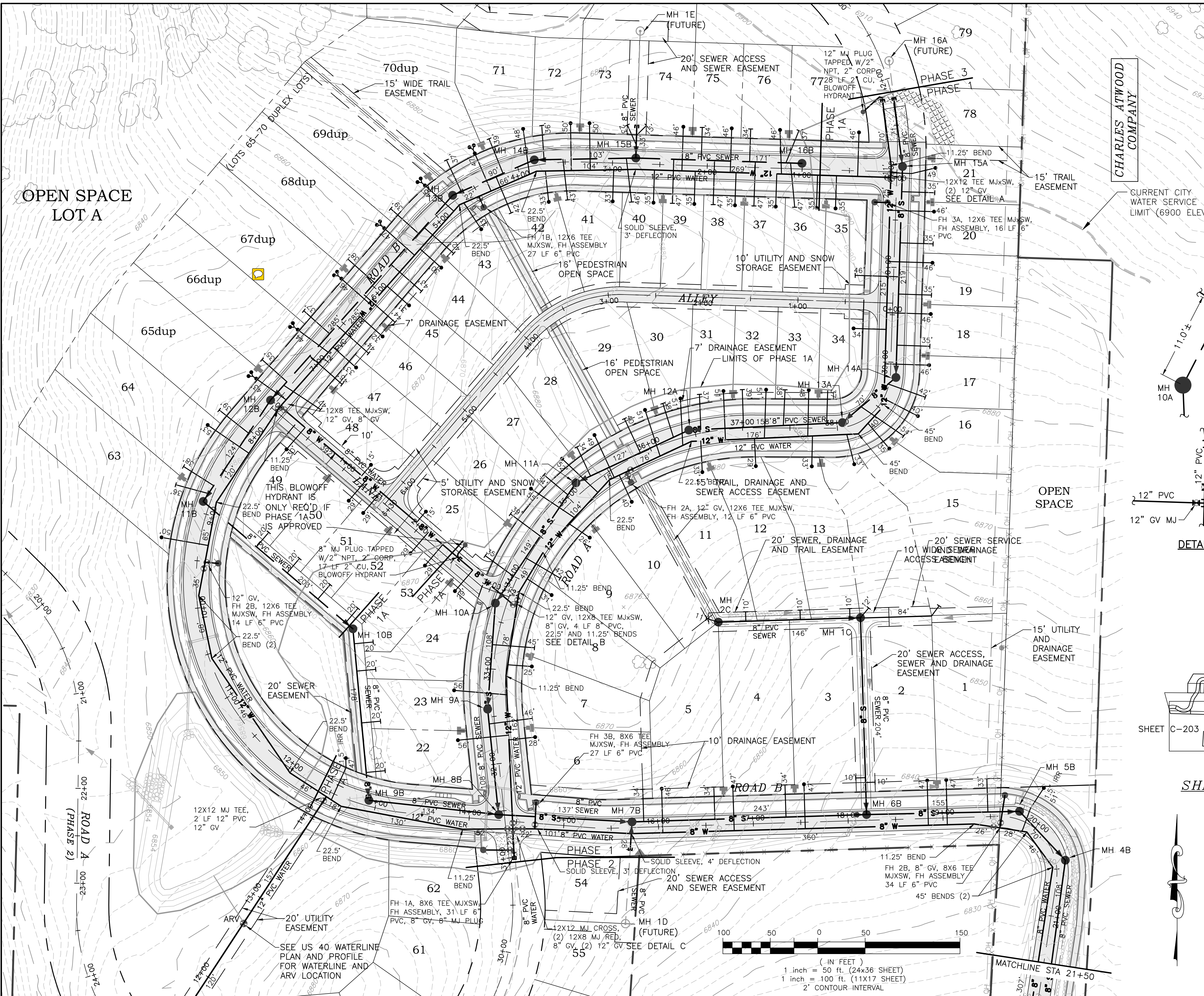


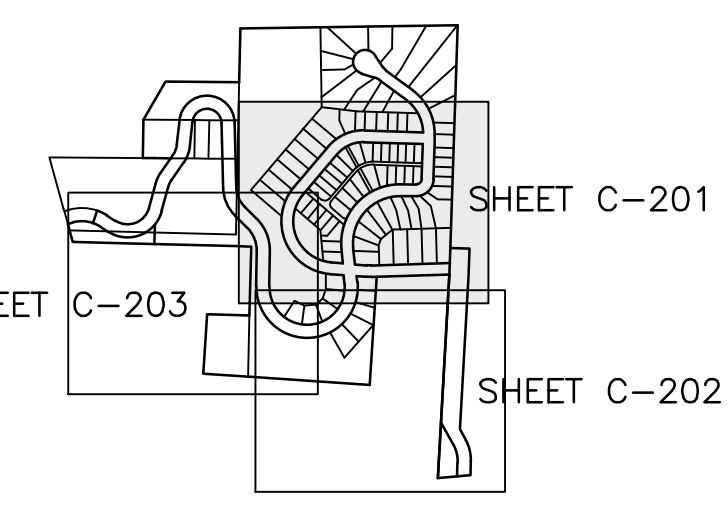
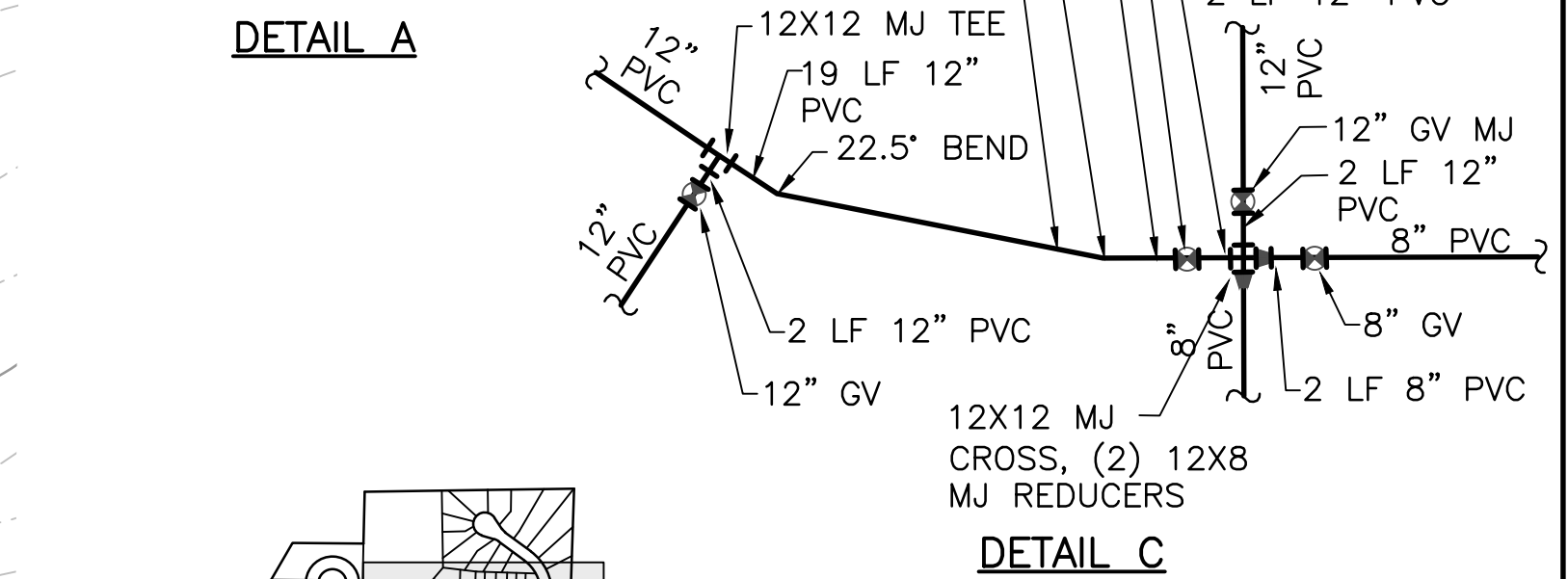
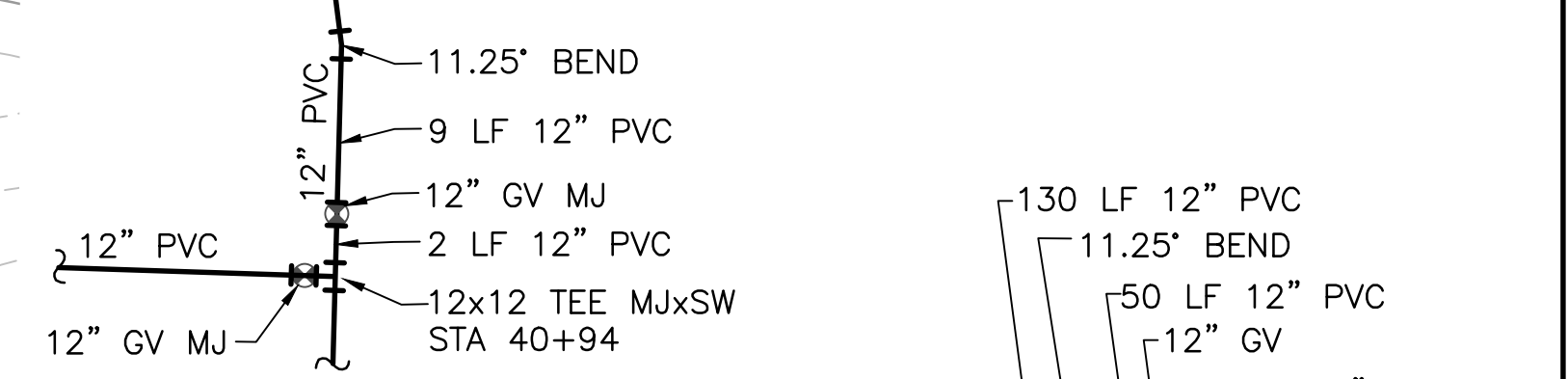
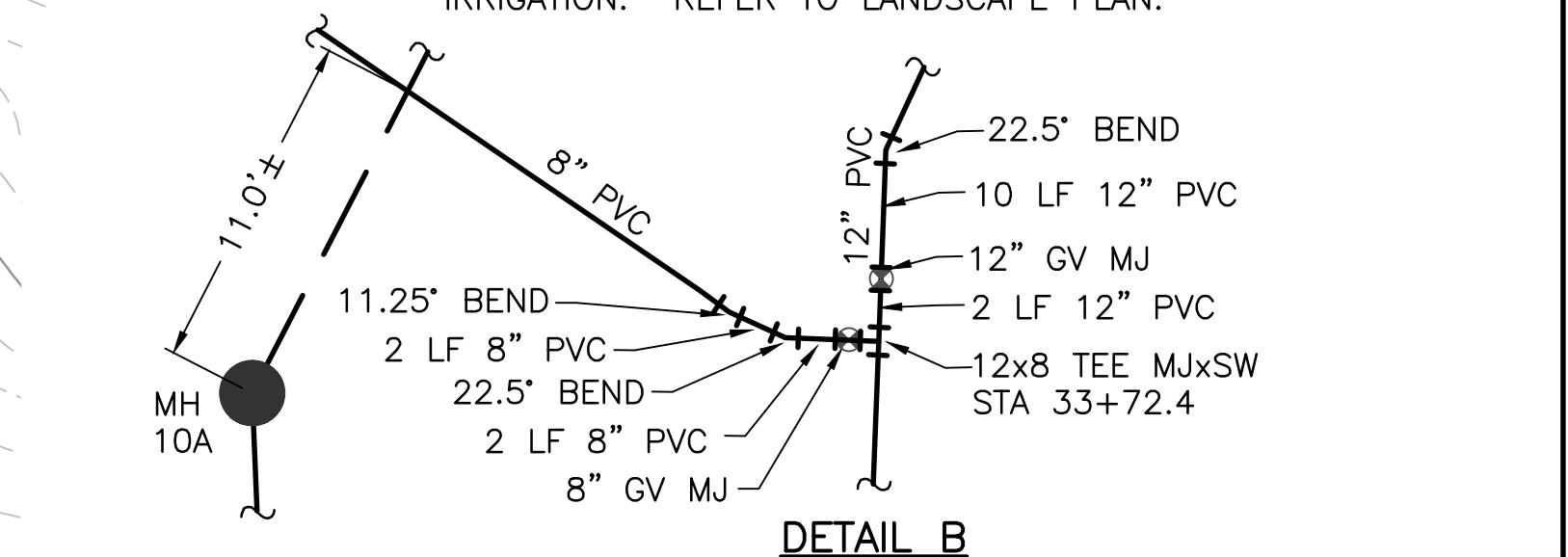
I:\4044-001A SUNLIGHT\Drawings\General Drawings\Sunlight-BASE.dwg, Util 50 SC (1), 2/3/2017 11:03:18 AM



- NOTES:
1. ALL BURIED WATER MAIN FITTINGS SHALL BE POLYETHYLENE WRAPPED AND TAPED.
 2. WATER AND IRRIGATION SERVICE LINE SIZES ARE 1" TYPE K CU UNLESS OTHERWISE NOTED.
 3. SEWER SERVICE LINE SIZES ARE 4" PVC, 2% SLOPE UNLESS NOTED OTHERWISE.
 4. 20' WIDE EASEMENTS TO BE PROVIDED FOR WATER AND SEWER MAINS OUTSIDE ROWS.
 5. PROPOSED ELECTRIC AND GAS LINE AND METER LOCATIONS ARE PRELIMINARY. CONFIRM WITH UTILITY COMPANIES. PLACE DRY UTILITIES IN CONDUIT UNDER PAVEMENT.
 6. PROVIDE 10' HORIZONTAL SEPARATION BETWEEN WATER AND SEWER SERVICE LINES. PROVIDE 5' SEPARATION BETWEEN DRY UTILITIES AND WATER AND SEWER MAINS AND SERVICES.
 7. CONSTRUCTION OR PLACEMENT OF ANY IMPROVEMENTS WITHIN A PUBLIC UTILITY EASEMENT INCLUDING BUT NOT LIMITED TO TREES, BOULDERS, FENCES, BERMS, STRUCTURES, PRIVATE UTILITY LINES, ETC. THAT IMPAIRS THE USE OF THE EASEMENT AS INTENDED IS PRECLUDED.
 8. PROVIDE CONCRETE BLOCK FOR FOUNDATION SUPPORT UNDER THE BASE OF FIRE HYDRANTS AND VALVES.
 9. PROVIDE CONDUIT(S) FOR FUTURE DATA CABLE IN DRY UTILITY TRENCH. COORDINATE WITH YVEA.
 10. PHASE 1A LIMITS SHOWN ARE FOR REFERENCE ONLY. PHASE 1A REQUIRES CITY APPROVAL PRIOR TO IMPLEMENTATION.
 11. 4" PVC SLEEVES TO BE PROVIDED UNDER THE ROADWAY FOR IRRIGATION. REFER TO LANDSCAPE PLAN.

CHARLES ATWOOD COMPANY

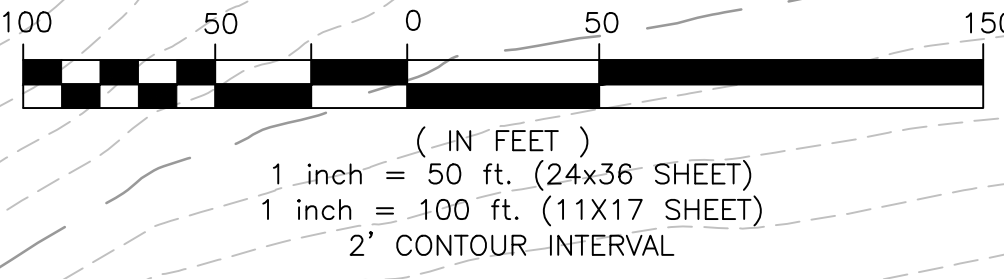
CURRENT CITY WATER SERVICE LIMIT (6900 ELEV)



SHEET KEY

No.	Item	REVISIONS	Date

Date: 7/28/16	SUNLIGHT, LLC
Drawn: LM	
Designed: JL	
Scale: AS NOTED	
SUNLIGHT UTILITY PLAN	
Civil Design Consultants, Inc. Engineers and Planners 2145 Resort Drive, Suite 100 Steamboat Springs, CO 80487 (970) 879-3022 • Fax (970) 879-3028	
SHEET NO. C-105	PROJECT NO. 4044.001A



MATCHLINE STA 21+50